



CHANTLAND

M H S

Material Handling Solutions

*Since
1943*

VIBRA-WEIGH

4219 OPEN MOUTH FILLER



The 4219 Vibra-Weigh Fillers (Standard, Table Top and Large Models) are designed to weigh and fill open mouth bags, boxes, pails and drums with dense dry pelleted, granular, powdered or irregular shaped products such as seeds, feed pellets, gravels and similar materials.

SOLUTIONS

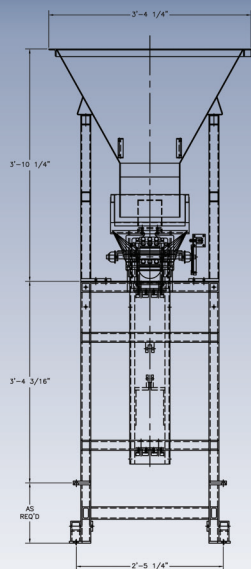
WWW.CHANTLAND.COM

BAG FILLERS ♦ CONVEYERS ♦ PALLETIZERS ♦ SYSTEMS

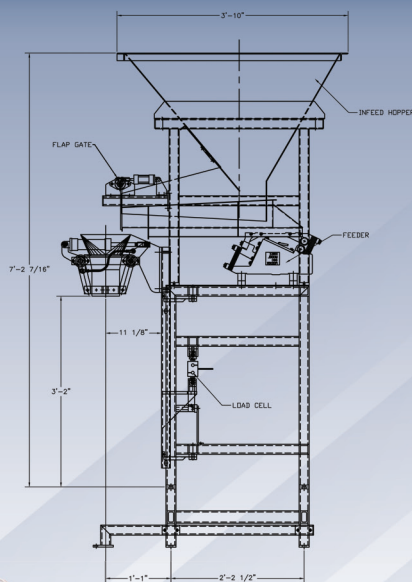


CHANTLAND

M H S



Optional
Load Cell Design Shown



DESIGN FEATURES:

- ✦ Scale beam gross weigh.
- ✦ Vibratory product feed.
- ✦ Vibratory feeder with variable frequency drive.
- ✦ Manual start.
- ✦ Manual bag clamps.
- ✦ 5.1/2" x 7" oval spout.
- ✦ NEMA 12 electrical system.
- ✦ Variable frequency vibratory control.
- ✦ Mild steel construction.

AVAILABLE FEATURES:

- ✦ Net weighing.
- ✦ Automatic fill start with bag in place switches.
- ✦ Pneumatic bag clamps.
- ✦ Load cell weighing with digital controller.
- ✦ Dust collection hood with manifold.
- ✦ Flow control gate for positive product cut-off.
- ✦ 2 speed VFD for bulk-dribble filling.
- ✦ Stainless steel contact surfaces.
- ✦ Food Grade construction.
- ✦ Anti-corrosive package.
- ✦ Special paint finishes.
- ✦ Special electrical packages.
- ✦ Supply and transition hoppers.



Enclosed Vibratory Tube Design



Table Top Model

STANDARD SPECIFICATIONS:

- ✦ Utility Requirements:
 - Electrical: 110 V., 60 Hz., 1 Ph.
 - Air: 8 CFM@80 PSI (required with pneumatic options)
- ✦ Fill Rates: up to (4) 50 lb. bags per minute depending upon product characteristics.
- ✦ Fill Weights: 1 lbs. to 110 lbs. for bags
- ✦ Weight Accuracy: 4 to 6 ounces from target weight depending upon product.

BAG FILLERS

CONVEYORS

PALLETIZERS

SYSTEMS

PO Box 279, Humboldt, Iowa, U.S.A. 50548 / Ph. 515.332.4045 Fax 515.332.1502

www.chantland.com