

# The Right Equipment For The Job

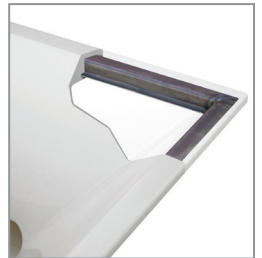
## PosiPortion™ Volumetric and Gravimetric Feeders

### Designed for a wide range of materials

- **Measure with precision:** Gravimetrically weigh and measure free-flowing and sluggish bulk solids, granules and powders
- **Achieve superior volumetric performance:** The PosiPortion™ feeder has an exclusive hopper design to maintain natural flow and keep the auger full.
- **Clean easily:** The quick-coupled components permit fast, efficient cleaning.
- **Maintain material quality:** No degradation, segregation or agglomeration.
- **Get design versatility:** Delivers discrete batches or operates continuously.
- **Ideal for silos and surge hoppers:** The PosiPortion™ feeder is engineered for starting under full loads



Remove hopper in seconds with quick-coupled screw. Unique design prevents decoupling when torque is applied.



Handle and store hopper easily. Steel reinforcement molded into the flexible hopper flange enables the hopper to retain its shape and capacity.

Get the strength and stability of structural tube-frame construction with the ability to support large hoppers or ancillary equipment.



### We're here to make a difference

Contact Bryon Vlier at (269) 382-8288  
or by e-mail at [bryon.vlier@hapman.com](mailto:bryon.vlier@hapman.com)  
[hapman.com](http://hapman.com)

**HAPMAN**  
Ideas that move.

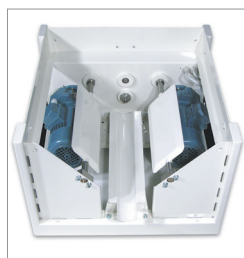
a  global company

## Specifications

Model No.	160	200	240	280	320
<b>CAPACITIES</b>					
HOPPER CAPACITY	600 in <sup>3</sup> (9,832 cm <sup>3</sup> )	600 in <sup>3</sup> (9,832 cm <sup>3</sup> )	1 ft <sup>3</sup> (0.028 m <sup>3</sup> )	1 ft <sup>3</sup> (0.028 m <sup>3</sup> )	3 ft <sup>3</sup> (0.085 m <sup>3</sup> )
FEED RATE	60 in <sup>3</sup> to 5 ft <sup>3</sup> /h (983.22 cm <sup>3</sup> to 0.142 m <sup>3</sup> /h)	0.5 ft <sup>3</sup> to 14 ft <sup>3</sup> /h (0.014 m <sup>3</sup> to 0.4 m <sup>3</sup> /h)	1 ft <sup>3</sup> to 50 ft <sup>3</sup> /h (0.028 m <sup>3</sup> to 1.416 m <sup>3</sup> /h)	2.6 ft <sup>3</sup> to 88 ft <sup>3</sup> /h (0.074 m <sup>3</sup> to 2.49 m <sup>3</sup> /h)	5 ft <sup>3</sup> to 1,100 ft <sup>3</sup> /h (0.142 m <sup>3</sup> to 31.15 m <sup>3</sup> /h)
<b>NOMINAL FRAME DIMENSIONS</b>					
DEPTH	16 in (40 cm)	16 in (40 cm)	24 in (60 cm)	24 in (60 cm)	32 in (80 cm)
WIDTH	16 in (40 cm)	16 in (40 cm)	24 in (60 cm)	24 in (60 cm)	32 in (80 cm)
HEIGHT	13 in (33 cm)	13 in (33 cm)	17 in (43.18 cm)	17 in (43.18 cm)	26 in (66.04 cm)
NOZZLE LENGTH	As required	As required	As required	As required	As required

Note: Specifications subject to change without notice. Contact a factory sales engineer for specifications and options.

## Options



Optimize product flow. External paddle agitators reduce bridging, limit material contact surfaces, and reduce opportunity for contamination.



Increase feeder performance with integrated load cells and instrumentation. Provides immediate feedback that material was delivered.



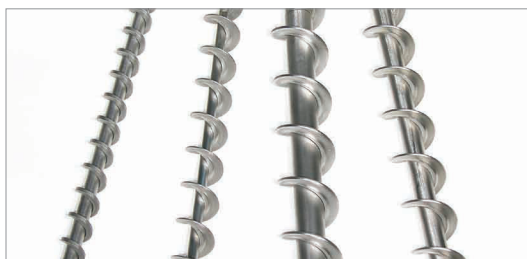
Handle spreading and seasoning applications with optional elongated distribution nozzle.



Keeps material in process; makes work environment safer with optional dust collection.



Optional level sensors help workers keep hopper full and feed rate consistent.



Choose from many easy-to-change-out auger options—flat, square, or round (with or without a center core), continuously welded, polished or milled from solid bar stock.

- Choose from straight nozzles, T-nozzles, nozzles with screw support bearing and elongated distribution nozzles for a variety of metering, spreading and seasoning applications.
- Increase holding capacity and extend time between refills with optional hopper extensions.
- Complete controls for continuous LIW or Volumetric batching applications.

## See More Equipment At [hapman.com](http://hapman.com)

Hapman offers a complete line of material handling equipment that easily integrates into existing systems, including:

- Bulk Bag Fillers
- Drag Conveyors
- Dust Collectors
- Tubular Drag Conveyors
- Vacuum Conveyors
- Bulk Bag Unloaders
- Helix Flexible Screw Conveyors
- Bag Compactors
- Lump Breakers
- And More

We offer a true performance guarantee ensuring your Hapman equipment achieves the specific results it was designed and manufactured to deliver. And if you need technical support, call us. We are available 24/7.



800-427-6260 (US/Can)  
sales@hapman.com  
hapman.com

**HAPMAN**  
Ideas that move.

a global company